

User Manual

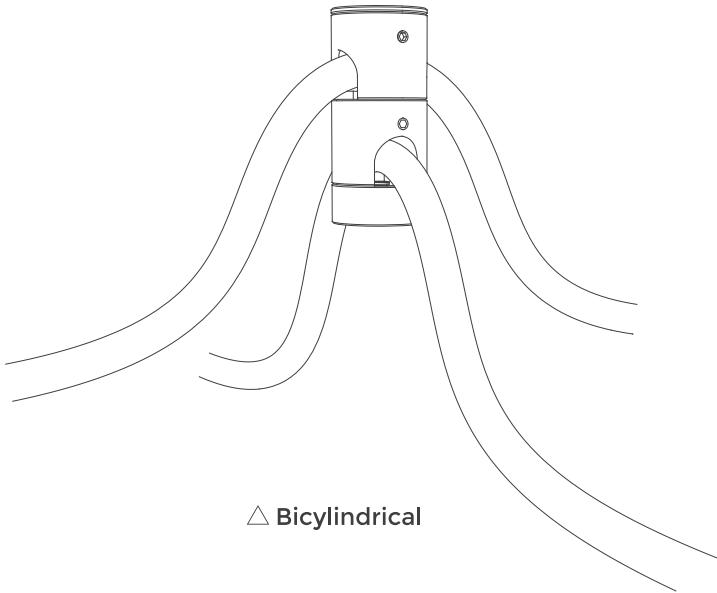
Low Voltage 360° Neon Strip Lights Accessories

V1.0

CL-ST-NEON25-360D-Wall mount clip B

Cylindrical wall mount clip

NNR Series



△ Bicylindrical

Please read this manual carefully before installation, and use it correctly.
This manual also contains instructions of accessories.
Please keep this manual properly for future reference.

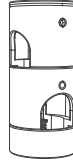
Prepare materials



NNR18/25
Neon



User Manual



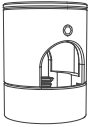
Cylindrical Accessory



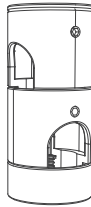
plastic cap screws

Cylinder optional

Please note: NNR18 Please use NNR18 cylinders.
NNR25 Please use NNR25 cylinders.



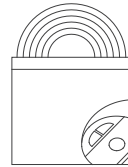
△ Cylindrical



△ bicylindrical

The above pairings can be chosen according to the actual styling needs.

5000mm



NNR18/25 Neon optional 5m,
or other customized lengths

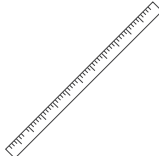
Installation tools



Cross
screwdriver



Pen

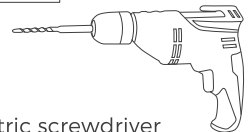


Tapeline



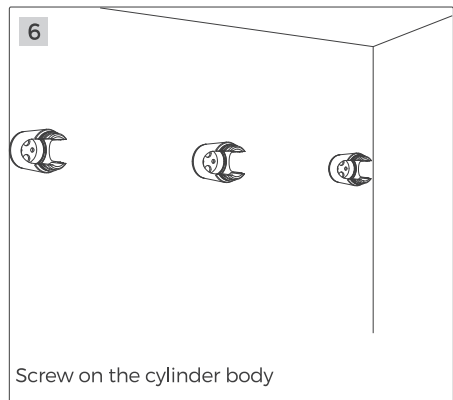
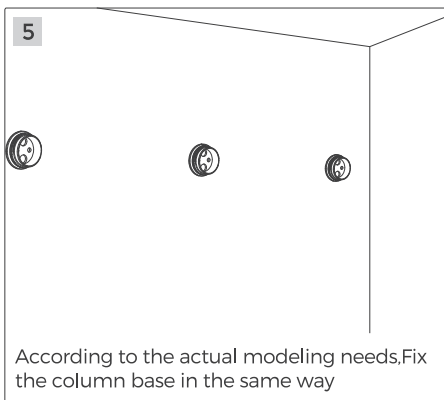
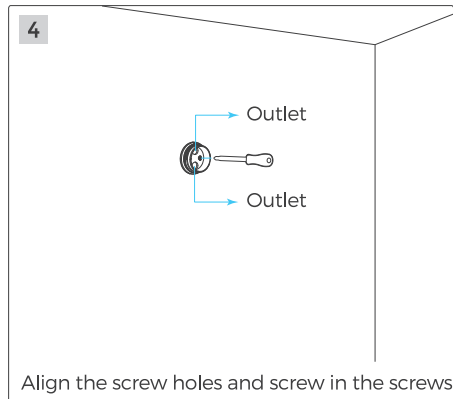
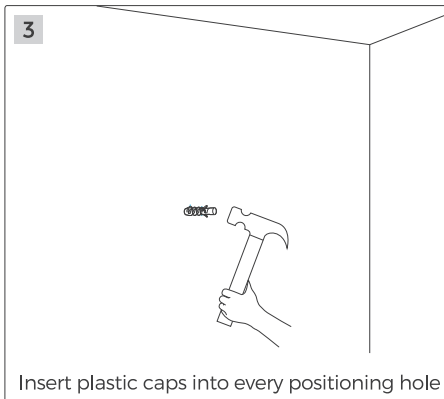
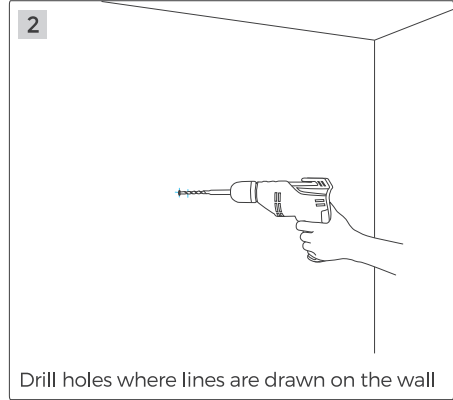
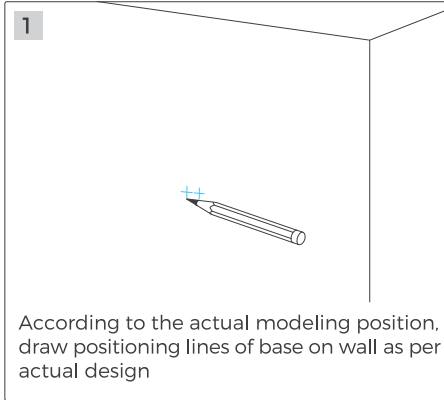
Hammer

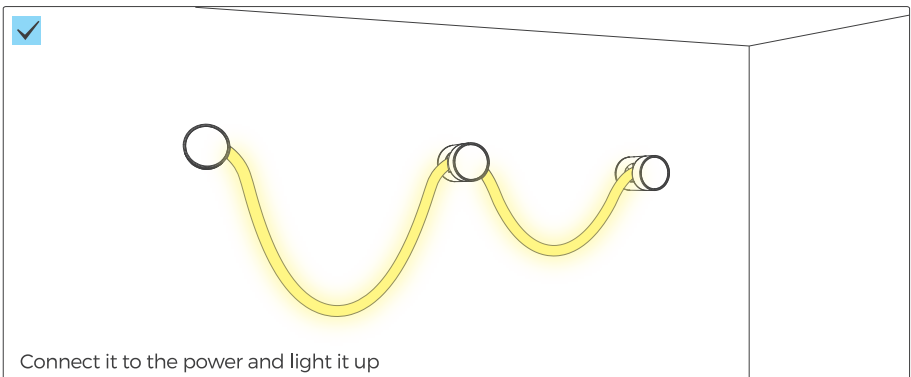
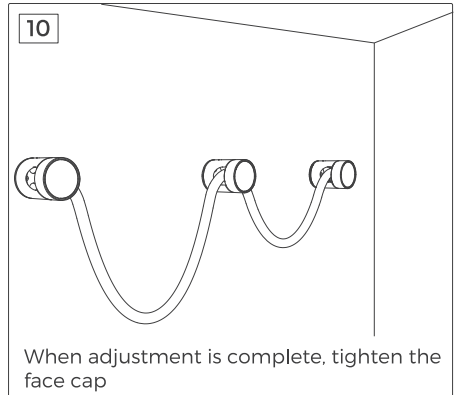
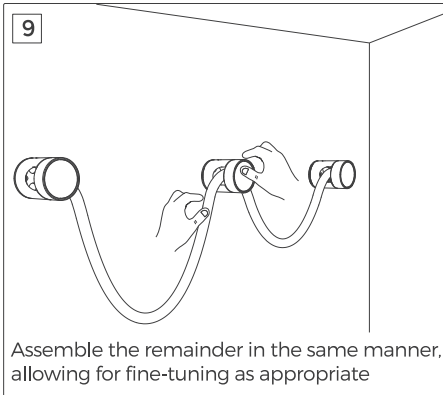
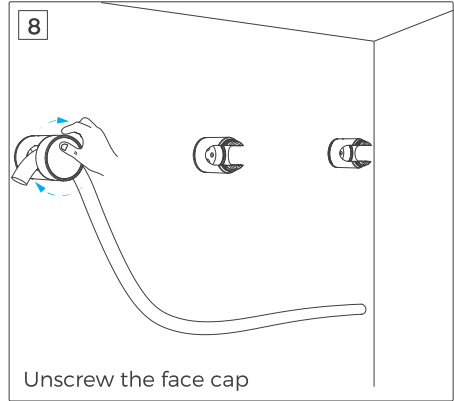
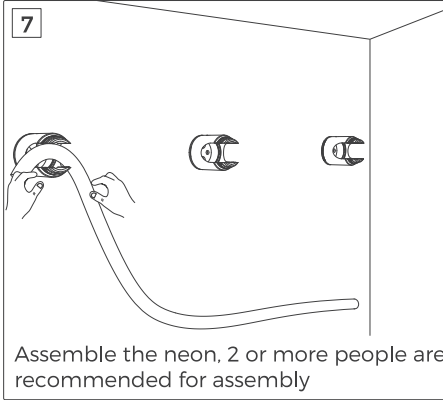
Ø6.0mm



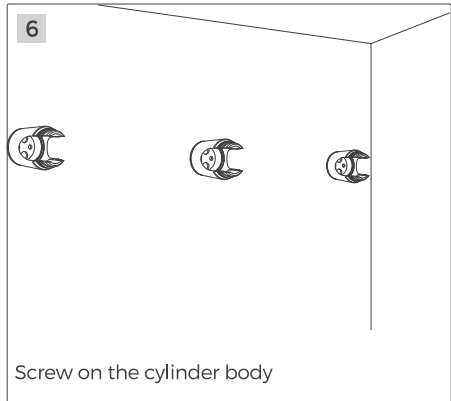
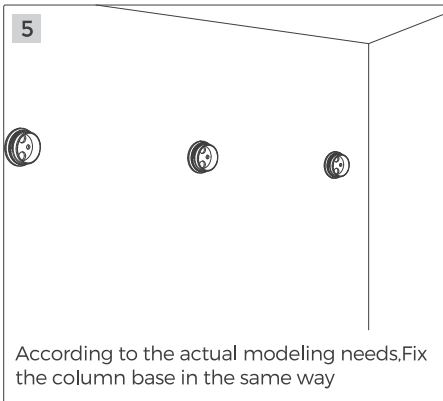
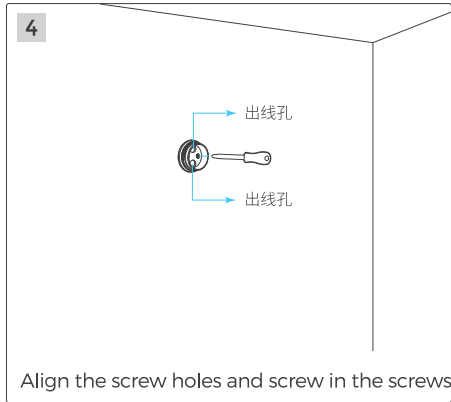
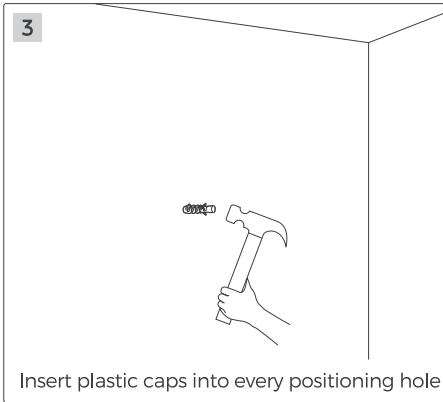
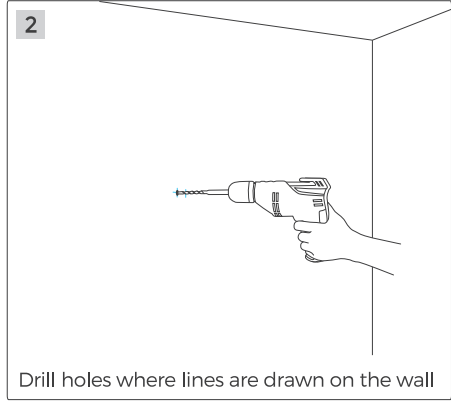
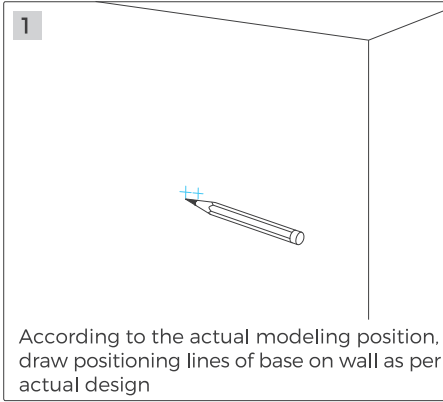
Electric screwdriver
(Ø6.0mm head)

Installation steps (Single Cylinder Mount)





Installation steps (Double Cylinder Mount)



7



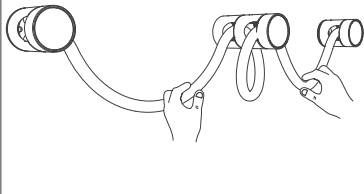
Assemble the neon, 2 or more people are recommended for assembly

8



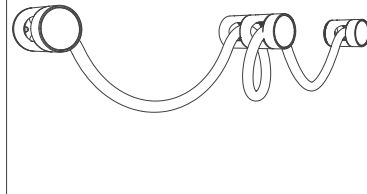
Assemble the neon product and unscrew the top cover when finished.

9

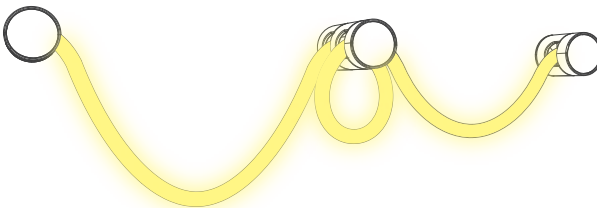


Assemble the remainder in the same manner, allowing for fine-tuning as appropriate

10



When adjustment is complete, tighten the face cap



Connect it to the power and light it up