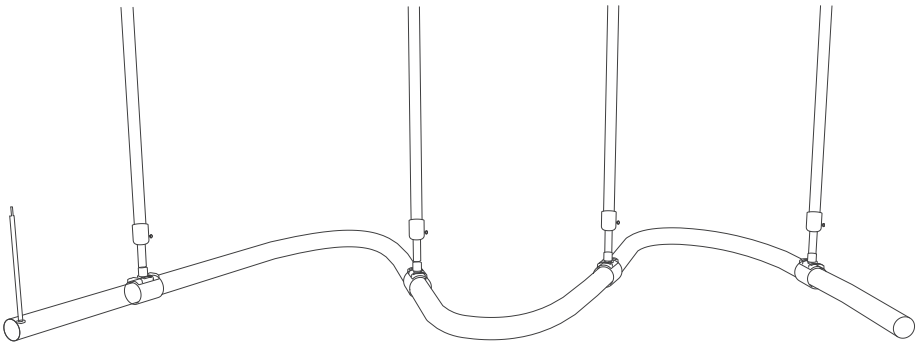


# Installation Manual

Low Voltage 360° Neon Strip Lights Accessories

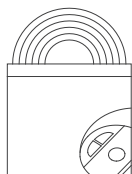
## CL-ST-NEON25-360D-Vertical lifting kit A and B

NNR25 shapeable accessories



Please read this manual carefully before installation, and install the product in the correct way.  
Please keep it after reading, so that all users of this product can check it at any time.

## Prepare materials



Neon strip



Manual



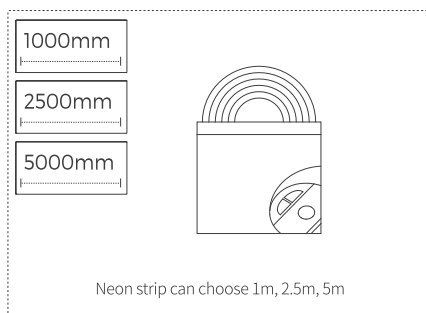
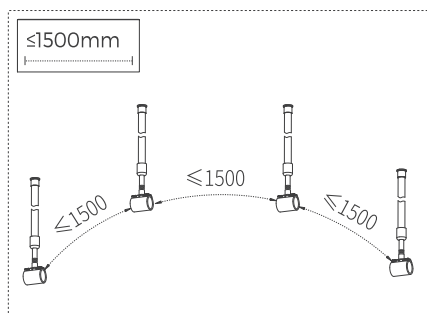
Rubber plug screw



Modeling accessories



Telescopic boom



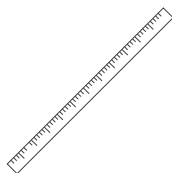
## Installation tools



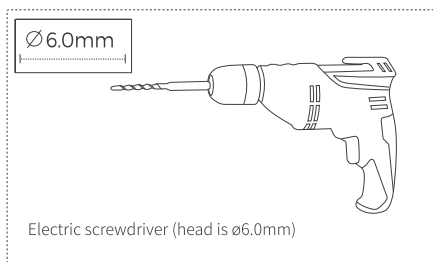
Phillips  
screwdriver



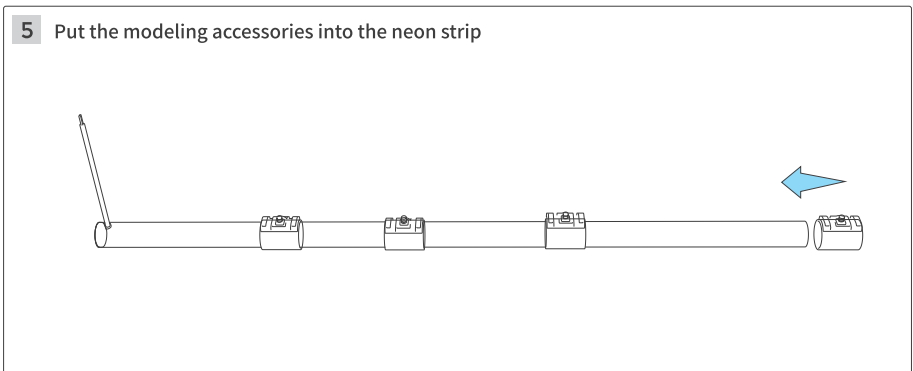
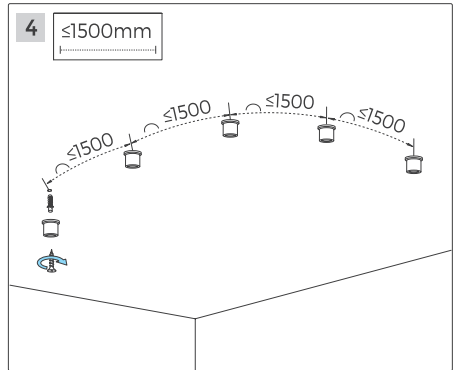
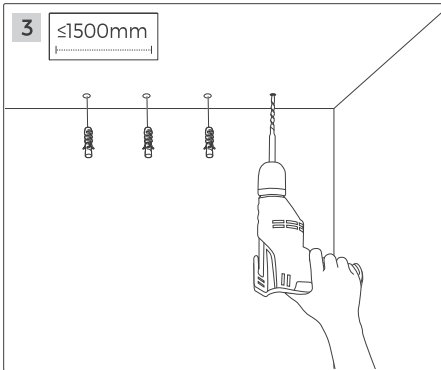
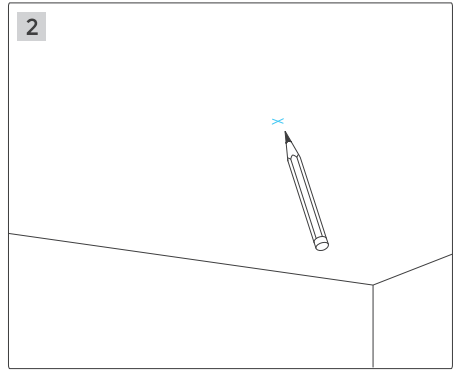
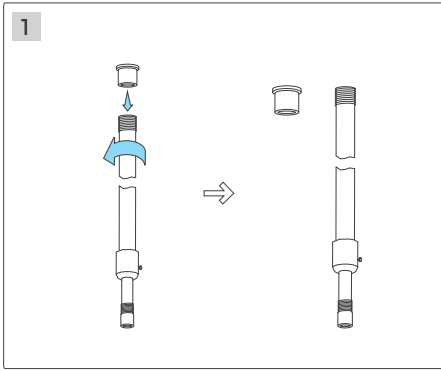
Pen



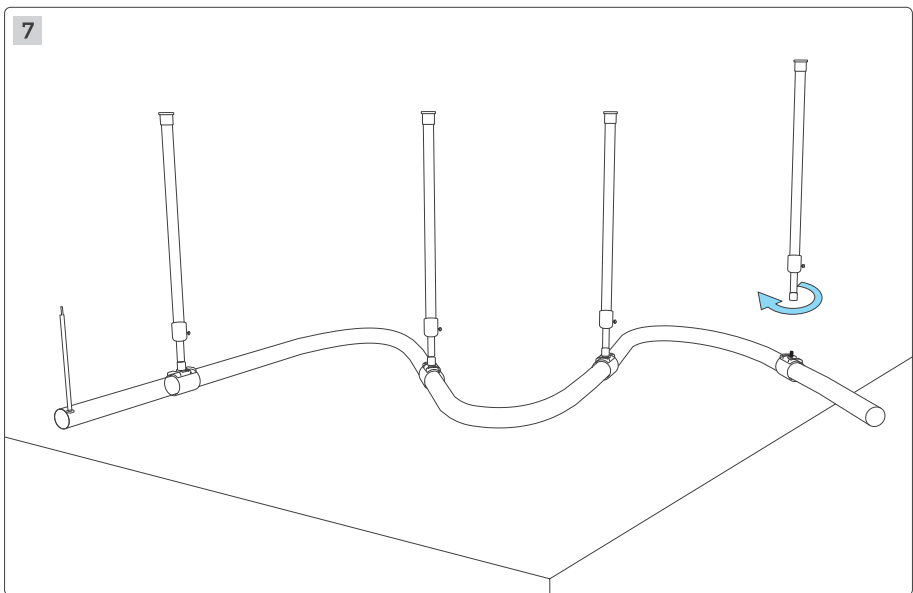
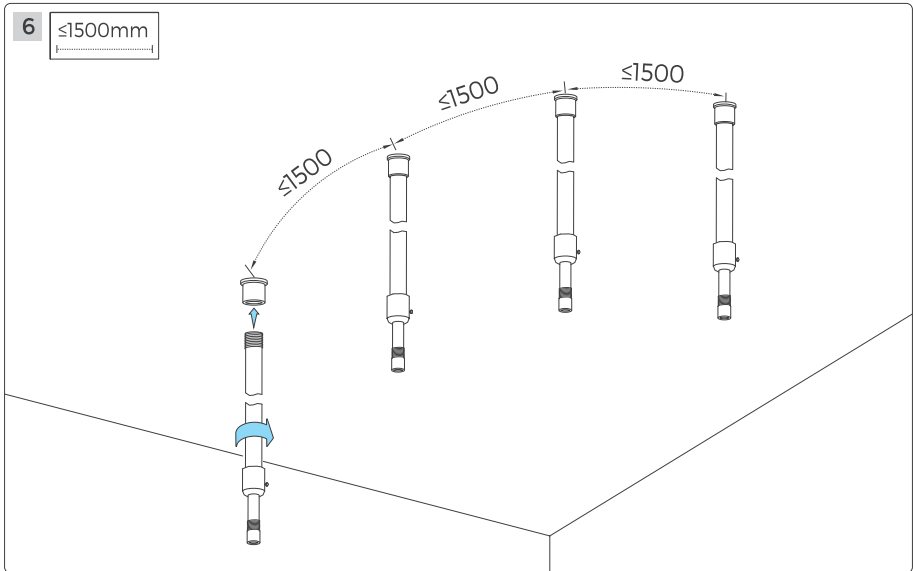
Tape measure



## Installation Steps



## Installation Steps



## Installation Steps

