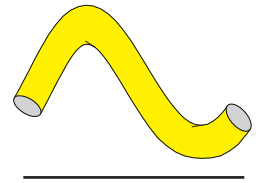


Low Voltage 360° Neon Strip Lights

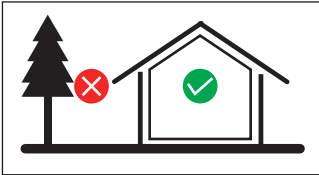
SILICONE NEON STRIP USER MANUAL

CL-STNEON25-360D-2465

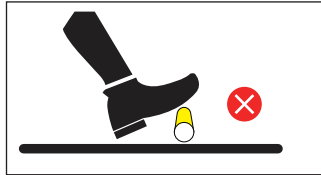


1 Precautions before installation

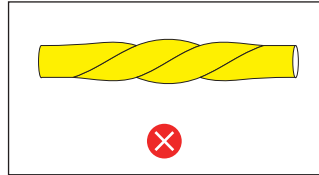
① Recommended for indoor use



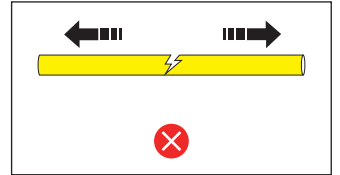
② No pedaling



③ No distortion



④ No Stretching

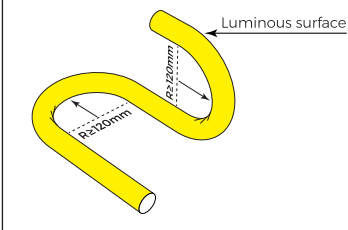


2 Silicone Neon Strip Bending Radius & Note

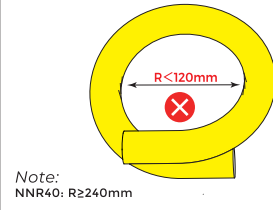


360° bending

① Bending Direction & Min. radius

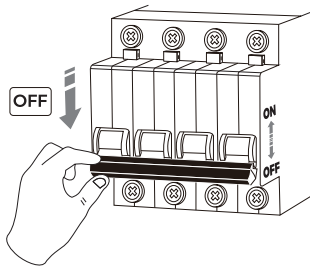


② The bending radius shall be no less than 120mm



3 Wiring Diagram

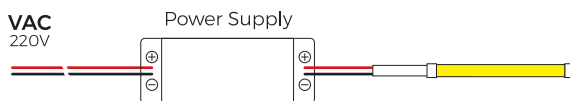
! Turn off the power before wiring !



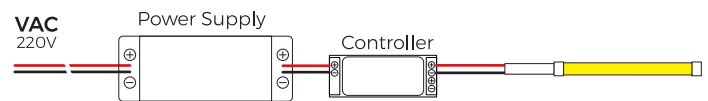
! Notes

1. These products are subject to thermal expansion due to temperature changes. Thermal expansion must be taken into consideration for installation in environment with wide temperature change.
2. Use water and methylated alcohol to clean the surface.
3. The product reaches IP65 protection. Please use wiring system with a protection level equal to or higher than IP65.
4. The product is not suitable for swimming pools and fountains.

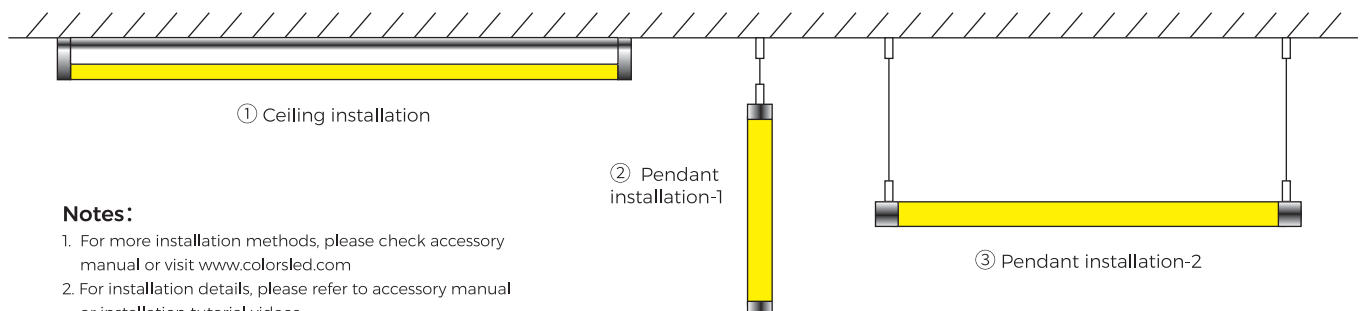
① Non-dimming connection mode



② Dimming connection mode



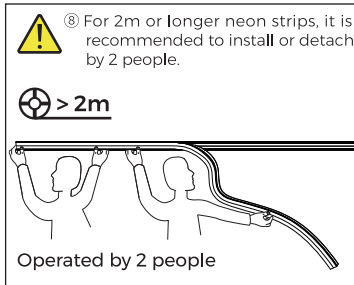
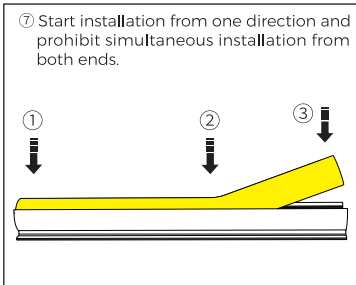
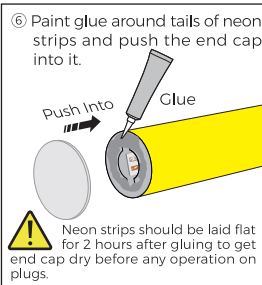
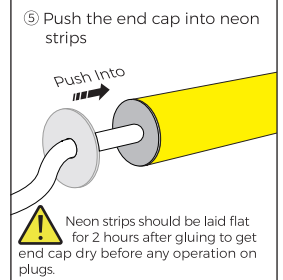
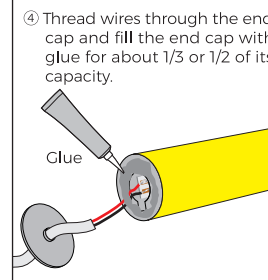
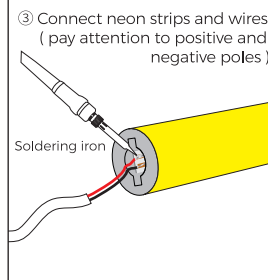
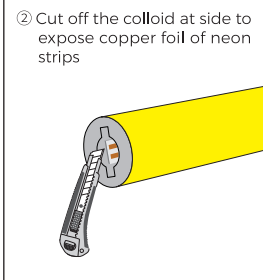
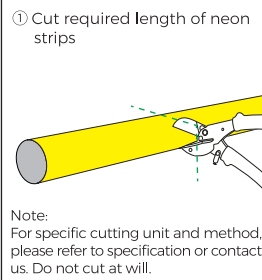
4 Installation



Notes:

1. For more installation methods, please check accessory manual or visit www.colorsled.com
2. For installation details, please refer to accessory manual or installation tutorial videos.
3. Contact our sales if any question.

Cutting / Welding / End cap installation guide



Note:

1. Use tools to install or detach neon strips. Do not drag it by hands to prevent damage.
2. For 2m or longer neon strips, 2 people are required to install or detach.
3. Pay attention to positive and negative poles to avoid short circuit and light beads damage.

Precautions and product warranty notes

Precautions:

1. Cut as per cutting line marks for required length of neon strips.
2. Use 24VDC isolated power supply of less than 5% ripple waves to drive neon strips and do not use RC buck or non-isolated power supply.
3. When connecting neon strips in series, light-up test should be made soon after each connection to promptly find out whether the positive and negative poles are correctly connected.
4. Pay attention to positive and negative poles connection. Make sure the power supply conforms to required voltage to avoid damage.
5. Silicone neon strips shall be stored in a dry and sealed environment for no more than 1 year at best. Working temperature: -25°C ~ +55°C; storage temperature: 0°C ~ +60°C (for digital series, working temperature: -20°C ~ +40°C; storage temperature: 0°C ~ +60°C)
6. Neon strips has unilateral conductivity. If a power cable with a DC/AC converter is used, power-on tests shall be done first after connecting power supply to ensure that the positive and negative poles are connected correctly.
7. In actual applications, 20% of the power supply shall be kept (recommended to use no more than 80% of the power) to guarantee that sufficient voltage is available to drive the product;
8. Attention shall be paid to safe operation. After powering on, it is not allowed to touch the AC power supply to avoid an electric shock.
9. To ensure the duration and reliability of neon strips, be sure to bend it in the specified direction and radius range. For details, please refer to the indicating marks.
10. Please confirm before usage since products of varied sizes may show slight differences in their color under same color temperature due to their structural differences.
11. Due to the characteristics of the silicone material, it is normal for the color of the colloid to change slightly after the neon product is used for a long time.

Please read the manual carefully before installation and application, and use the product in the correct way.
Instructions on accessories are included in the manual.
Please properly reserve the manual after reading for future reference.

