



Canadian Brightness

High Voltage Dotless LED Strip Light

Input Voltage: 110-120 VAC 50/60Hz

Power: 10W/m

Lumen: 700lm/m

IP 65 CRI>90

SMD2025 - 260 Pcs/m

Length: 30m/Roll (98.43Ft)

Model No:AH-2025-120V-260-**-98.43FT

WARNING:

Do not mount or support the flexible light in a manner that could damage the outer jacket or cord insulation.

Risk of fire and electric shock. Uncoil the flexible light before plugging it in.

Do not install near flammable liquids.

AVERTISSEMENT :

Ne pas monter ou installer le cordon lumineux de manière à endommager son revêtement extérieur ou l'isolation du câble.

Risque d'incendie et de choc électrique. Déroulez le cordon lumineux avant de le brancher.

Ne pas installer près de liquides inflammables.

Suitable for Outdoor Use:

CAUTION – Risk of electric shock.

Do not use with an extension cord near water or where water may accumulate.

For use only on GFCI-protected circuits.

The material may become brittle when cold.

DO NOT install where it may be stepped on or subject to physical damage.

POUR UTILISATION À L'EXTÉRIEUR :

ATTENTION – Risque de choc électrique.

Ne pas utiliser avec une rallonge à proximité d'une piscine ou dans un endroit où l'eau risque de s'accumuler.

Utilisez exclusivement sur des circuits avec protection GFCI.

Le matériau peut devenir fragile par temps froid. Ne pas installer où il peut être piétiné ou soumis à des dommages physiques.

CAUTION:

Do not overload. This product's length is 0.16 feet. Do not connect together more than 82.1 total feet.

Risk of fire or electric shock. Use only flexible light extension segments specified in the manufacturer's instructions.

ATTENTION :

Ne pas surcharger. La longueur de ce produit est de 0.16 pieds.

Ne pas relier plus de 82.1 pieds au total.

Risque d'incendie ou de choc électrique. Utilisez uniquement les segments d'extension spécifiés dans les instructions du fabricant.



USER MANUAL



Canadian Brightness

www.canolight.ca

Safety Instructions

1.The LED strip and its accessories must not be squeezed or folded, as this may damage the circuit board during installation.

2.Ensure compliance with electrical safety standards during installation. Installation should be performed by a professional electrician.

3.Provide an anti-corrosion environment for the LED strip. Maintain an appropriate surrounding temperature—neither too hot nor too cold—and ensure adequate ventilation to prevent brightness degradation or damage.

WARNINGS

Install in accordance with national and local electrical code regulations.

This product is intended to be installed and serviced by a qualified, licensed electrician.

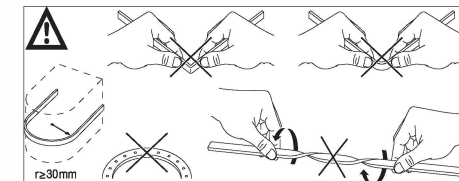
Do not modify or disassemble this product. Any modifications will void the warranty.

Do not use if there is any damage to the fixture or wiring. Inspect periodically.

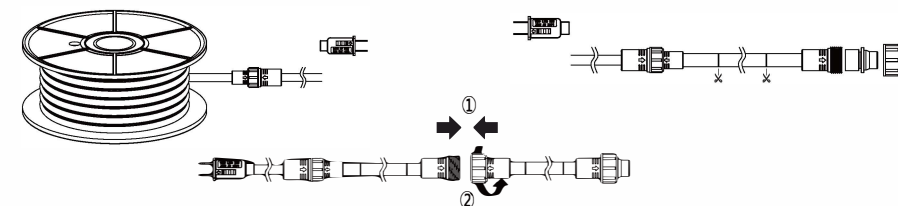
DO NOT LIGHT THE STRIP WHILE ROLLED UP.



SHOCK HAZARD! May result in serious injury or death
Turn power OFF at circuit breaker prior to installation.

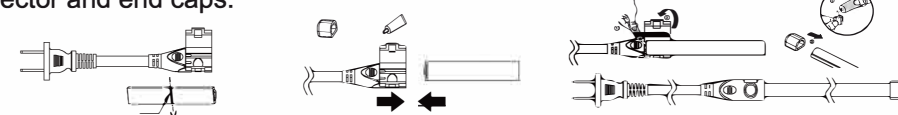


Installation Instructions



When connecting LED strips:

1.Twist the nut between the female and male connectors, as well as between the female connector and end caps.

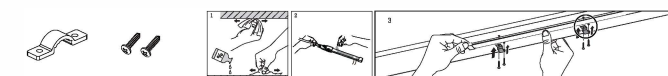


2.When cutting LED strips, follow these steps to attach the assembled connector:

Cut the strip at the designated cutting line.

Insert the end of the strip into the assembled power cord connector, ensuring the copper pad is securely in contact with the strip's PCB pad.

Apply glue inside the end cap and attach it to the end of the strip.



3.Mounting the LED strip:

Ensure the mounting surface is flat and clean.

Remove the adhesive backing and stick the strip onto the mounting surface.

Use mounting clips for additional security and a tighter fit.