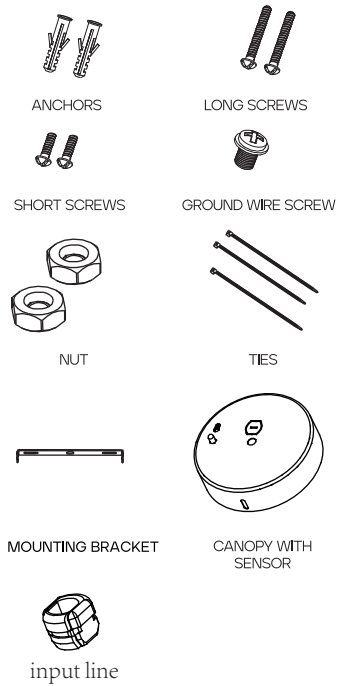


! Risk of fire and electricity The installation must be done by electricians or professionals Turn off the power supply before operation.

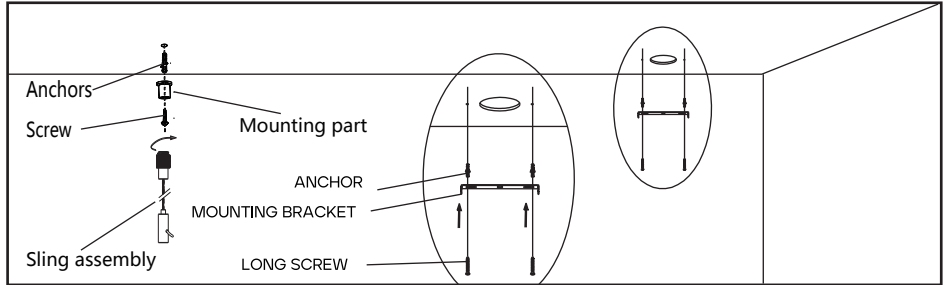
Notice

1. Read this instruction carefully before installation.
2. Installation should be in accordance with national and local electrical laws and regulations.
3. Product should installed by qualified and licensed electrician.
4. Do not install in humid places, for dry and non-humid environments only.
5. Always turn off the power supply before installation or maintenance.
6. To reduce the risk of fire and overheating, make sure all connections are tight.
7. Fixtures should not covered with thermal insulation pads or similar materials at any circumstance.
8. Do not touch the fixture if trial operation in case of danger.
9. Do not use out doors.

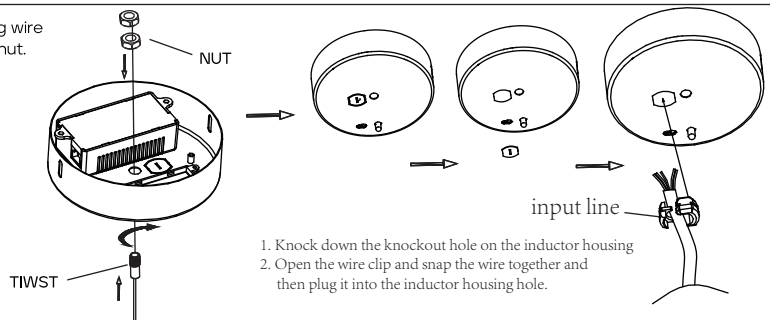
Parts List



1. Make holes in the ceiling according to the model of the lamp, and fix the mounting bracket to the ceiling with screws.

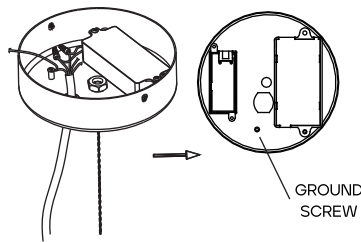


2. Secure hanging wire to canopy using nut.

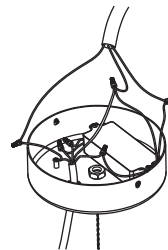


1. Knock down the knockout hole on the inductor housing
2. Open the wire clip and snap the wire together and then plug it into the inductor housing hole.

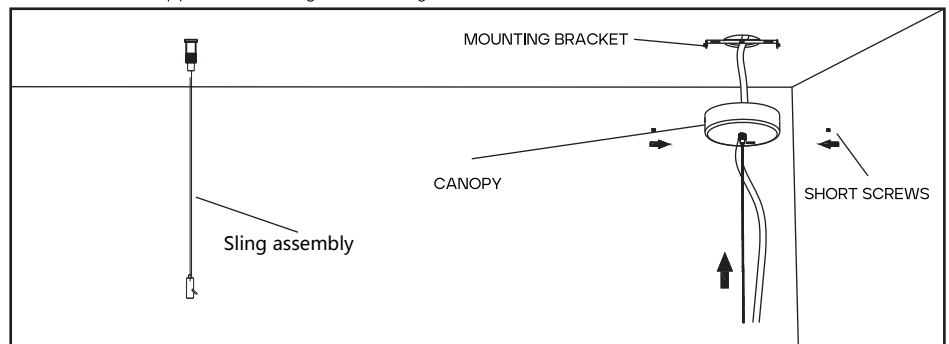
2.1. Secure ground wire from power feed to canopy using ground wire screw.



Wire fixture and motion sensor according to motion sensor instructions.



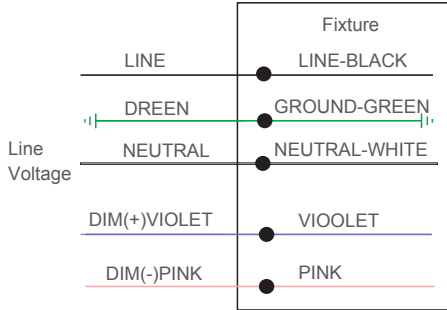
3. Secure the canopy to the mounting bracket using short screws.



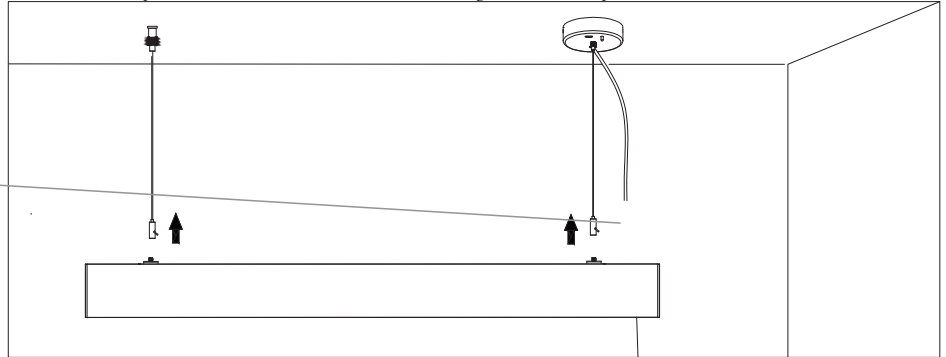


Risk of fire and electricity The installation must be done by electricians or professionals Turn off the power supply before operation.

Wiring Diagram



4.Refer to the lamp installation instructions for the remaining installation steps.



1. If dimming is not used, please separate the dimming wires with nuts.
2. Wiring must follow up the wiring diagram.
3. Remind again: Cut off the power supply before operation.

INTRODUCTION

The BRI820 mounts in an outdoor lighting fixture and provides multi-level control based on motion and/or daylight contribution. It controls 0-10 VDC LED drivers or dimming ballasts, and is rated for wet and cold locations.

All control parameters are adjustable via a wireless configuration tool capable of storing and transmitting sensor profiles.

SPECIFICATIONS

Power supply	100-347VAC, Single Phase, 60Hz 208/230/480VAC Phase-to-Phase, 60Hz
Maximum load @ -40°F ~ +185°F (-40°C ~ +85°C)	100-120 Vac, 800W, Tungsten 100-120 Vac, 800W, Electronic Ballast/Led Driver 230-240 Vac, 300 W, Electronic Ballast/Led Driver 277 Vac, 1200W, Electronic Ballast/Led Driver 347 Vac, 1200W, Electronic Ballast/Led Driver 480 Vac, 480W,Electronic Ballast/Led Driver
HF System	5.8GHz CW
Dim control output	0-10 VDC Dimming, 50mA
Detection radius/angle	Max 26ft.(8m)/360°
Mounting height	Max 20ft.(6m)
Remote range	50ft. (15m) indoor, no backlight
Time setting	10sec.-30min. (adjustable)
Light-control	10-2000Lux (adjustable)
Humidity	Max. 95% RH
Temperature	-40°F ~ +185°F (-40°C ~ +85°C)

Once powering the device up, the BRI820 will use factory default parameters to operate. If adjustments are needed, "RC-100" Wireless IR Configuration tool must be used.

WARNING

NOTE: Warm up time is 15seconds. After the sensor connects input power first time, the light will keep on 15seconds,then go to dimming to work normally.

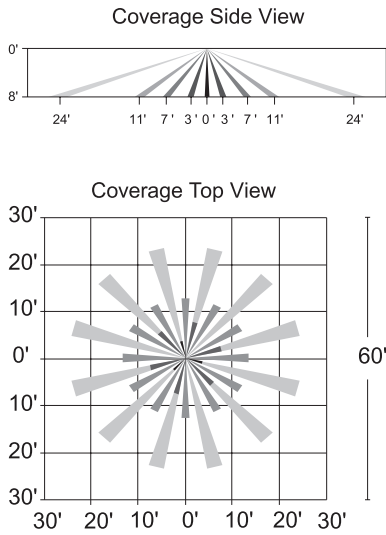
NOTE: Factory Default Setting: 100% sensitivity, Hold on time: 5min, Daylight sensor is ☼, Dimming level:30%,Dimming time: 60minutues.

NOTE: Any setting changed by remote control, the led light that sensor connect will on/off as confirm.



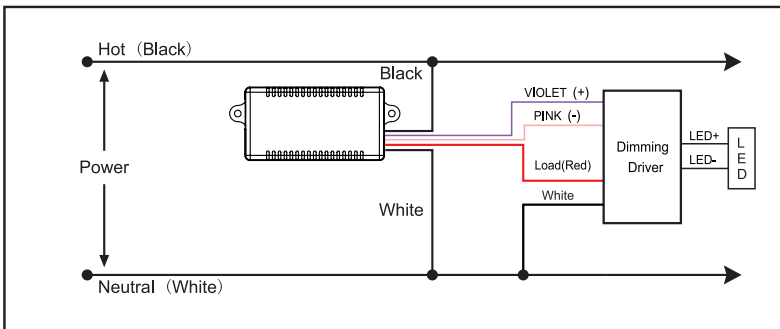
Risk of fire and electricity The installation must be done by electricians or professionals Turn off the power supply before operation.

SENSOR COVERAGE



WIRING DIAGRAMS

Dimming Driver



Non-Dimming Driver

